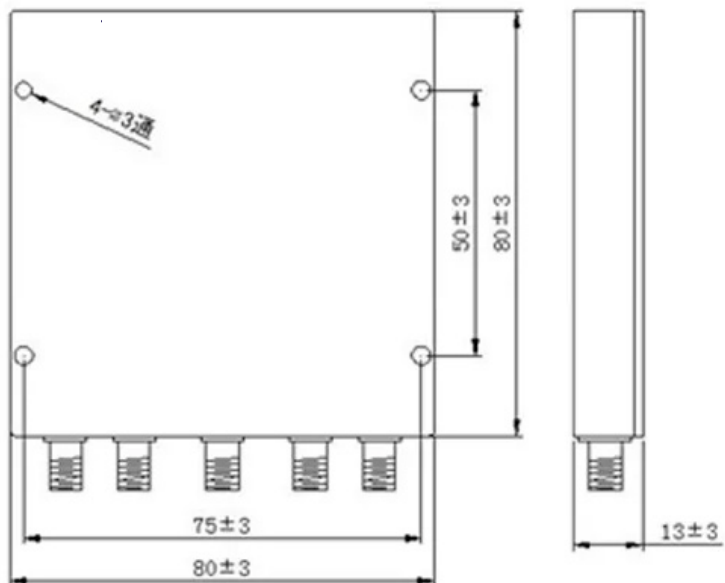
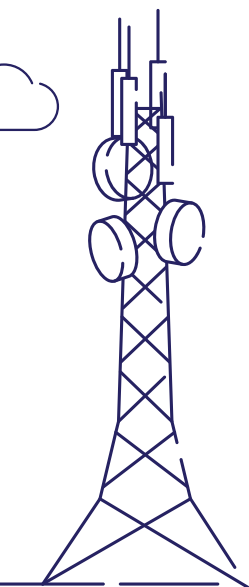




## Combiner

# 4 Way Splitter/Combiner



Parameter	Specification	
Frequency Range	600-6000MHZ	
Insertion Loss(Max) (above theoretical 6.0dB)	600-2700MHZ	3500-6000MHZ
	1.0	1.3
Isolation(Min)	600-2700MHZ	3500-6000MHZ
	16dB	18dB
Phase Unbalance(Max)	6	
Amplitude Unbalance(Max)	0.4dB	
Coupling (In-Out)	6.3:1.5dB	6.5+1.5dB
Sum Port VSWR (Max)	1.5	
Port 1-4 VSWR (Max)	1.25	
Impedance	50Ω	
Operating temp	-35 ~ +80 °C	
Connectors	N Type	
Power Handling(Max)	Splitter	Combiner
	30W	0.5W
	All outputs must terminate 50 ohm (VSWR 1.2:1 or better)	
Mount	19" rack	

